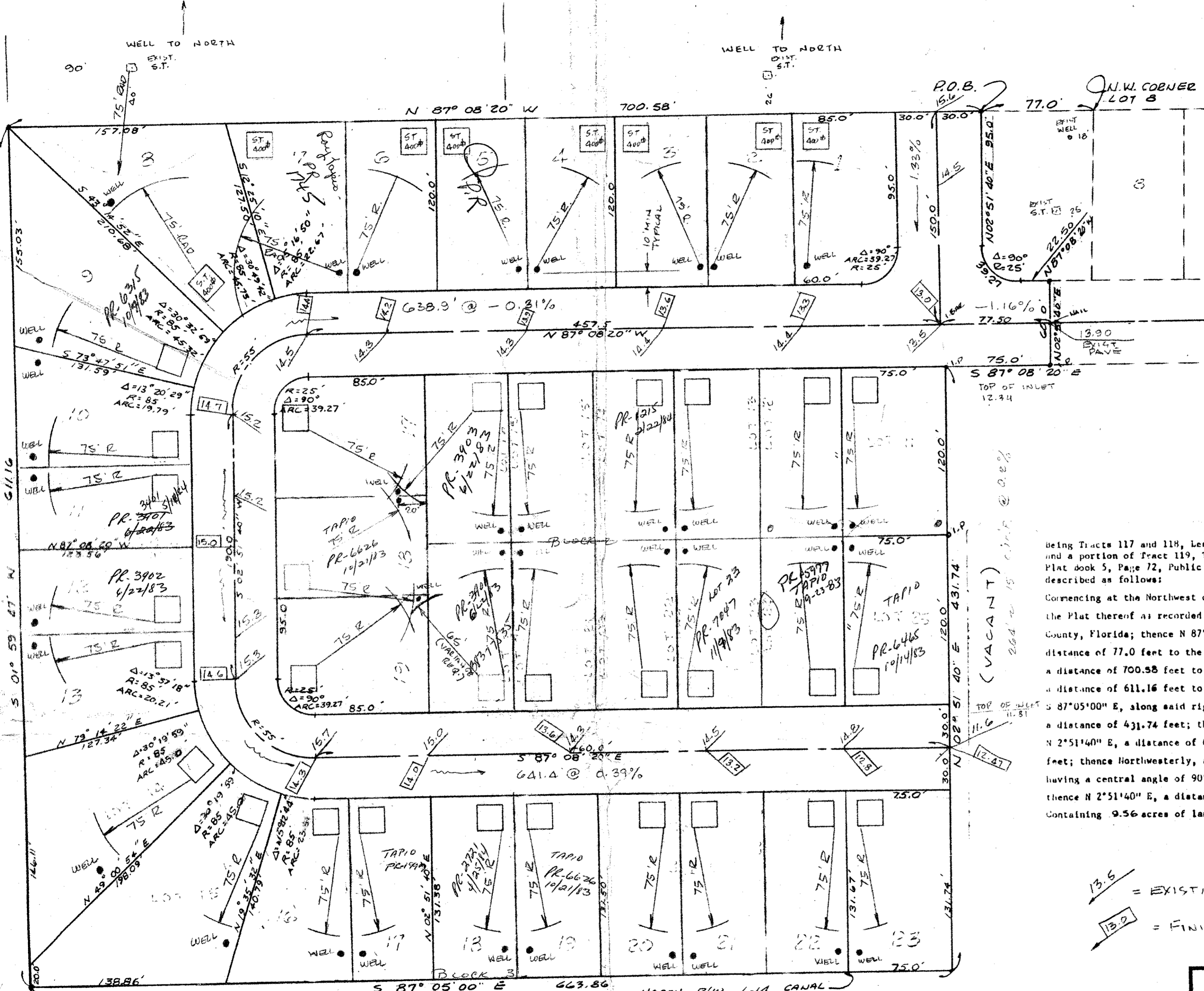


TAPIO ADDITION TO
AUGUSTINE ACRES



AUGUSTINE ACRES
P.B. 26, P. 55

being Tracts 117 and 118, Less the South 25.0 feet thereof for canal right of way, and a portion of Tract 119, The Palm Beach Farms Company Plat no. 7, as recorded in Plat book 5, Page 72, Public Records of Palm Beach County, Florida, more particularly described as follows:

Commencing at the Northwest corner of Lot 8, Block 1, Augustine Acres, according to the Plat thereof as recorded in Plat Book 26, Page 55, Public Records of Palm Beach County, Florida; thence N 87°08'20" W, along the North line of said tract 119, a distance of 77.0 feet to the point of Beginning; thence continuing N 87°08'20" W, a distance of 700.58 feet to the Northwest Corner of Tract 117; thence S 1°59'47" W, a distance of 611.16 feet to the North R/W line of L.W.D.D. Canal L-14; thence S 87°05'00" E, along said right of way, a distance of 663.86 feet; thence N 2°51'40" E, a distance of 431.74 feet; thence S 87°08'20" E, a distance of 75.0 feet; thence N 2°51'40" E, a distance of 60.0 feet; thence N 87°08'20" W, a distance of 22.5 feet; thence Northwestwardly, along the arc of a curve concave to the Northeast, having a central angle of 90°, a radius of 25.0 feet, a distance of 39.27 feet; thence N 2°51'40" E, a distance of 95.0 feet to the Point Of Beginning.

Containing 9.56 acres of land more or less.

ur0211.igr
TAPIO ADDN TO AUGUSTINE ACRES PG2
18/44/43

13.5 = EXISTING GRADE
13.2 = FINISHED CROWN GRADE

L. W. D. D. [-] 14

I HEREBY CERTIFY THAT THE PLAT SHOWN HEREON IS A TRUE AND CORRECT REPRESENTATION OF A SURVEY OF THE PROPERTY DESCRIBED IN THE CAPTION THEREOF MADE UNDER MY DIRECTION AND IS ACCURATE TO THE BEST OF MY KNOWLEDGE AND BELIEF, AND THAT THERE ARE NO ENCROACHMENTS UNLESS NOTED.

[Signature]
FLORIDA CERTIFICATE NO. 2360

TAPIO ADDITION TO AUGUSTINE ACRES TRACTS 117 & 118, P.B. FARMS CO. PLAT NO. 7.		
SCALE 1" = 50'	APPROVED BY:	DRAWN BY R.A.T.
DATE: 5-1-81		REVISED:
		DRAWING NUMBER
		81/117A
		1117A